



CONSTRUCTION ACCESSORIES

PLASTIC SHIM DATASHEET

ESSENTIAL COMPONENTS FOR EVERY STAGE OF CONSTRUCTION



MONTAGEPLATTE

FREE OF PVC

Application:

Leveling shims made of plastic as an assembly aid, e.g. when installing prefabricated parts.

Installation:

Full-surface, no concentrated point loading. Despite its high stability, no permanent load may be applied. After adjusting the components, they must be lined.



Material:

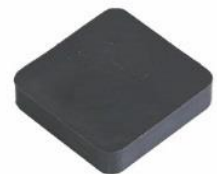
- Polystyrol (PS)
- Free of PVC, CFC, HFC
- Without substances of very high concern according to the candidate list of ECHA (REACH Regulation)

Packaging:

Free of halogenated products, azo dye, fire protection agents.

Order information – MONTAGEPLATTE FULL:

Item-No.	Thickness mm	Dimension mm	Pcs/ Bag	Pcs/ Big Bag	Pcs/ Pallet
UP02	2	70x70	125	1.000	15.000
UP03	3	70x70	125	1.000	15.000
UP04	4	70x70	125	500	15.000
UP05	5	70x70	125	500	15.000
UP06	6	70x70	125	500	15.000
UP07	7	70x70	125	500	15.000
UP08	8	70x70	125	-	12.000
UP09	9	70x70	125	-	12.000
UP10	10	70x70	125	-	10.000
UP12	12	70x70	125	-	8.000
UP15	15	70x70	50	250	8.000
UP20	20	70x70	50	250	6.000



full

Order information – MONTAGEPLATTE LIGHTWEIGHT:

Item-No.	Thickness mm	Dimension mm	Pcs/ Bag	Pcs/ Big Bag	Pcs/ Pallet
UP09N	9	70x70	125	-	12.000
UP10N	10	70x70	125	-	10.000
UP15N	15	70x70	50	250	8.000
UP20N	20	70x70	50	250	6.000



lightweight

INFORMATION:

The information given is the best that Nevoga researched and prepared at this time. The instruction sheets are recommendations. Correct use is the responsibility of the user. Nevoga does not guarantee the accuracy and completeness of the information. All rights for changes, mistakes, sentence and printing errors reserved.

MONTAGEPLATTE

Order information – MONTAGEPLATTE:

Item-No.	Thickness mm	Dimension mm	Pcs/ Bag	Pcs/ Pallet
UPS02	2	70x70	125	15.000
UPS03	3	70x70	125	15.000
UPS05	5	70x70	125	15.000
UPS07	7	70x70	125	15.000
UPS09	9	70x70	125	12.000
UPS10	10	70x70	125	10.000
UPS12	12	70x70	125	8.000
UPS15	15	70x70	50	8.000



horse shoe

INFORMATION:

The information given is the best that Nevoga researched and prepared at this time.
The instruction sheets are recommendations. Correct use is the responsibility of the user.
Nevoga does not guarantee the accuracy and completeness of the information.
All rights for changes, mistakes, sentence and printing errors reserved.



SDG

Get in touch

HEAD OFFICE

*21 Tullygoonigan Industrial Estate
Moy Road
Armagh
BT61 8DR
Tel: +44 (0) 28 3752 8999*

MONAGHAN OFFICE

*Cornacrieve
Emyvale
Monaghan
HY18 XY 46
Tel: + 353 (47) 87 295*

sdgconstructiontechnology.com

Email: *sales@sdg.ie*