

# SDG

STRONGER  
TOGETHER

## SMOOTH POINT PIER EXTENSION PROJECT KILLYBEGS

### MAIN CONTRACTOR

Sorensen Civil  
Engineering

### CLIENT

Department of Agriculture, Food and  
the Marine

### CONSULTING ENGINEER

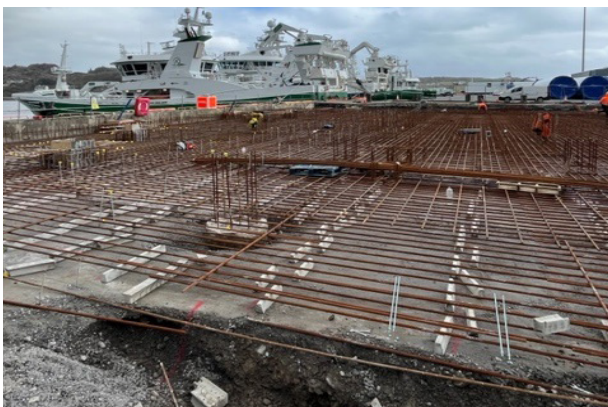
Doran Consulting

### PROJECT SUMMARY

The Smooth Point Pier Extension project at Killybegs Fishery Harbour Centre involved the construction of a new 120-metre-long quay to alleviate congestion during peak fishing seasons. Delivered by Sorensen Engineering on behalf of the Department of Agriculture, Food and the Marine, the project also required the dredging of over 10,000 cubic metres of rock from the harbour bed. SDG was a key supplier, providing a comprehensive range of concrete and formwork accessories, curing agents, and bearings. This project aimed to enhance berthing facilities at Ireland's premier fishing port, supporting the local seafood industry and community.

### THE CHALLENGE

The Smooth Point Pier Extension project presented several challenges. The primary objective was to complete the quay development promptly to ease the congestion at Killybegs Harbour, especially during the peak fishing season. The project also involved substantial dredging operations, which had to be managed carefully within a restricted and busy working environment. Coordinating the delivery of materials and ensuring the project stayed on schedule was critical to its success.



### SDG Products Supplied



### OUR SOLUTION

SDG played a crucial role in addressing these challenges by supplying an extensive range of high-quality products and ensuring timely deliveries. The products supplied included concrete and wire spacers, tying wire, curing agents, stainless steel dowel bars, crack inducers elastomeric bearings and much more..

### THE RESULT

The successful completion of the Smooth Point Pier Extension project resulted in a significant enhancement of the Killybegs Fishery Harbour Centre's berthing capacity. The new quay development alleviated congestion during the peak fishing season, improving operational efficiency for harbour users. The project's timely completion was a testament to the effective collaboration between Sorensen Engineering, Doran Consulting Engineers and suppliers like SDG. This extension not only supports the local fishing industry but also bolsters the economic stability and growth of the coastal community.

